



### Effortless comfort

Manitou is committed to designing solutions that combine maximum comfort with optimum safety

- Total visibility**  
 The one-piece windshield, open roof structure and high cab position give you full 360° and upward visibility. Eliminate blind spots with the optional SafeView camera package (2 cameras: rear + side).
- Easy access to the cab**  
 A 2 tread Easy Step with under-door lighting make getting in and out even easier, day or night. This considerably reduces the risk of impact/fall for the operator.
- Intuitive operation**  
 In the cab, all controls are within reach and clearly identifiable (pictograms, colour codes). In addition, dashboard pop-ups inform you in real time about the use of the machine.
- JSM Autopower**  
 Exclusive to Manitou, the JSM Autopower function automatically adjusts engine speed according to the joystick movements operated by the driver's hand. This reduces fuel consumption and fatigue.

### The quietest cabin

As noise in the cab is the main cause of fatigue for agricultural machinery operators, the MLT 850 offers a very low noise level, comparable to that of the best tractor cabs.



DISCOVER THE JSM AUTOPOWER INNOVATION

### At your service!

Focus on your core business and leave the rest to us.

#### Stay connected with your Manitou machine

View your machine remotely through a web and mobile application, anticipate maintenance and analyse performance. Share data with your nearest dealer for personalised advice and enhanced responsiveness in the event of a breakdown. The Manitou connected solution ensures optimal availability.

#### Work with peace of mind with an extended manufacturer warranty

Operate with complete peace of mind thanks to a modular extended warranty. Always at your service, whatever your use, standard or intensive.

#### Manitou offers financing solutions

Manitou offers financing solutions to help you realise your projects. Talk to your dealer and we will find the most suitable solution!

#### Take advantage of a complete service

Entrust your dealer with the maintenance of your work tool with a complete and irrefragable service. Your maintenance budget is predictable, clear and without surprises. In case of transfer, your machine will be even more valuable.

### A whole organization at your service

We are committed to maintaining your machines and maintain a stock of spare parts available worldwide within 24 to 72 hours.



“  
 As a very intensive farmer, I manage many different activities such as livestock, biogas and contract farming. Every day, I try to optimise the performance of these activities. To achieve this goal, I need a cost effective handling solution with a very high output.”

Contact your dealer



Scan and discover more information on [manitou.com](http://manitou.com)

**MANITOU**  
 HANDLING YOUR WORLD

This publication provides the description of the versions and configuration possibilities of Manitou products, which may differ in terms of equipment. The equipment presented in this brochure may be available as part of a series, available as an option, or not available, depending on the versions. Manitou reserves the right, at any time and without notice, to amend the specifications described and represented. The specifications provided do not bind the manufacturer. For more details, please contact your Manitou agent. This is not a contractually binding document. The presentation of the products is not contractually binding. The list of specifications is non-exhaustive. The logos and visual identity of the company are the property of Manitou and cannot be used without authorisation. All rights are reserved. The photos and diagrams in this brochure are only provided for consultation and information purposes. Manitou BP SA - Limited company with board of directors. Share capital: 35347,824 euros - 857 802 508 RCS Nantes

brochure\_document\_mlt850\_700772\_a\_manitou\_en\_us



RANGE  
**New AG XL**  
**MLT/MLT-X 850**

**MANITOU**  
 HANDLING YOUR WORLD



### Maximum productivity

Manitou designed the MLT 850 to give you the highest performance in very intensive applications.

- Top productivity**  
 With 5-ton capacity, high-volume attachments and quick hydraulic working speeds, the MLT 850 offers the best in class productivity (+18% versus the competition).
- Efficient hydraulics**  
 The Regenerative Hydraulics\* system lowers the boom by gravity independently of the engine rpm, offering up to 5% lower fuel consumption.
- Highly versatile transmission**  
 The continuously variable M-Vario Plus transmission provides you with very high traction. The comfort and dynamic modes allow you to adjust the machine's behavior to your needs.
- Loading efficiency**  
 The HighView camera installed on the boom head allows you to monitor the fill level of your trailer directly from the cab, as if you were there.

### High power 24 hours a day

The MLT 850 offers more than **600 Nm** of torque, with a drawbar pull of over **9160 daN**. The high movement speed provided by the **200 l/min** LSU pump is complemented by a bucket breakout force of over **8670 daN**. Combined with a high-capacity tank, this allows you to work with the best flow rate all day long without interruption.



DISCOVER THE HIGHVIEW CAMERA INNOVATION

### Unmatched profitability

Manitou is committed to reducing the total cost of ownership of your machine (TCO).

#### Unmatched total cost of ownership

The MLT 850 offers the lowest total cost of ownership in its class (-8% versus competition). Its fuel consumption is significantly lower than the competition (-20% with 6.5 l/hour\*\*), as is its preventive maintenance cost (-4%).

\*\*Conforms to EN 16796-4 norm- fuel consumption tests

#### The right choice of tires

Our agricultural and semi-industrial tyre solutions cover all needs. On hard ground, semi-industrial tyres offer higher durability, comfort and traction as well as lower fuel consumption.

#### Reduced maintenance

Service intervals have been optimised (engine oil change at 1000 hours). The self-cleaning air pre-filter located above the engine compartment reduces the frequency of cleaning the main air filter.

#### Easy Service

The two-piece engine cover opening provides quick access to major components. In addition, a quick-opening panel allows straw and dust to be blown away in front of the radiators. The centralised greasing points (optional automatic greasing system\*) are easily accessible.



TCO  
**-8%**  
 vs competition

### Stop and Start

Stop & Start\* reduces fuel consumption, emissions, hour meter and noise by shutting down the engine when the machine is stopped, without operator intervention (automatic restart). The hour meter is therefore based on actual working hours, thus spacing out maintenance and increasing the resale value of your machine.





## The solution for your intensive applications

Thanks to the large choice of high capacity attachments designed and validated by the Manitou group, your MLT 850 delivers the best work rate in its category on various applications: loading (bulk, silage, manure, compost), handling (straw/hay/cotton, Big Bag, pallets).

**5t** Max. capacity  
**7.60m** Lifting height  
**200 l/min** Max. hydraulic flow



### Total visibility

Raised cab with panoramic windshield, open roof grill and front (HighView\*), side and rear (Safeview\*) cameras

### Hydraulic speed

Fast hydraulic movements with a flow rate of 200 l/min.

### Simplified greasing system

Centralised greasing points for the chassis, axles and boom pivot with full automatic greasing system\* also available.



### High capacity agricultural bucket

Capacity of 4500 liters with a width greater than the machine (2700 mm) and a reduced depth to facilitate the extraction of the heap.

### Wide range of tires

500/70 R24 size tires available in agricultural or semi-industrial profiles.

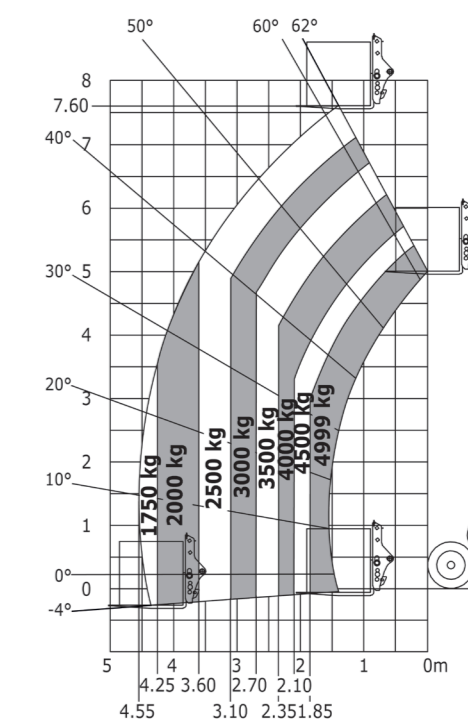
### Perfect control

Heavy duty reinforced axles with powerful and precise multi-disc braking on all 4 wheels.

### Safe ascent/descent

With easy step and staircase.

	MLT 850-145 V+	MLT-X 850-145 V+
Max. capacity (kg)		4 999
Max. outreach (m)		4.55
Max. lifting height (m)		7.60
Engine norm / Engine	Yanmar STAGE V / Final Tier 4	Yanmar STAGE IIIA
I.C. Engine power rating (hp) / Power (kW)		141 / 105
Gearbox		M-Vario Plus
Unladen weight (with forks) (kg)		10 780
Overall length to carriage (with hitch) (m)		5.57
Overall width (m)		2.49
Overall height (m)		2.58
Max. travel speed (km/h)		40
Ground clearance (m)		0.45
External turning radius (m)		4.04



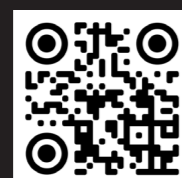
Rough terrain load chart (EN1459 B) 500 mm load center

Agricultural bucket	Agricultural grab bucket	Environment bucket
Essential attachment for intensive loading of bulk materials with a capacity of 4500 liters.	Multifunctional solution for intensive handling of agricultural materials (silage, manure...) with a capacity of 2600 liters.	Massive structure adapted to intensive loading of bulk materials in environmental applications (compost, mud, pulp...) with a capacity of 3000 liters.
<b>4500 LITERS</b>		

Environment grab bucket	Square bale clamp	Fork bale cotton
Ideal solution for the handling of clean waste (paper, crushed green waste, wood chips) with a capacity of 2200 liters.	Handles up to 3 round bales or 4 rectangular bales at the same time (nominal capacity of 2100 kg).	To handle and move a cotton bale without damaging it (max. capacity = 5 tons).

**compact bucket high capacity**  
width 2 meters - 800 liters

**Side shift fork carriage**  
lateral movement of the forks when placing loads.



DISCOVER ALL ATTACHMENTS AVAILABLE

**The highest work rate in its category**  
**(+18% compared to the competition)**

Highlights	Benefits
bulk bucket - <b>4500 l</b> wider than the machine	<b>High loading capacity without driving on the material</b>
Drawbar pull <b>&gt; 9160 daN</b>	<b>Efficient entry into the heap and quick filling of the bucket</b>
Bucket breakout force <b>&gt; 8670 daN</b>	<b>Fast pile removal without high engine speed</b>
Hydraulic flow <b>200 l/min</b>	<b>High hydraulic movement speed</b>



\*Standard or optional according to the finishing level

## Why choose MLT 850 ?

Complete solution for very intensive activities.

Dedicated to the most committed environments such as large, highly intensive farms, biogas cooperatives, agricultural work companies and the Environment market (waste, recycling, compost).

### A tailor-made solution adapted to your needs

Discover a wide range of options. To have access to all the options, ask your Manitou contact for advice.



SafeView camera



Adaptive air suspension seat



AGS (Automatic Greasing System)

### 3 levels of finishing

Platinum

Elite

Premium